



**THE CITY OF SAN DIEGO**  
**General Plan**  
*Land Use and Community Planning Element*

Using Geographic Information Systems (GIS), this figure shows existing areas that already exhibit village characteristics and areas that may have a propensity to develop as village areas based on having certain existing or planned characteristics; it does not take the place of site-specific planning. These characteristics include the location of parks, fire stations, transit routes, and existing and community plan designated land uses. Actual village locations will be designated in community plans with the input from recognized community planning groups and the use of locational criteria established under the policies section. Community plans will also house site-specific design guidelines to ensure the successful implementation of each site. Many community plans already identify sites suitable for mixed use and provide extensive design and development policy guidance for development of those sites.

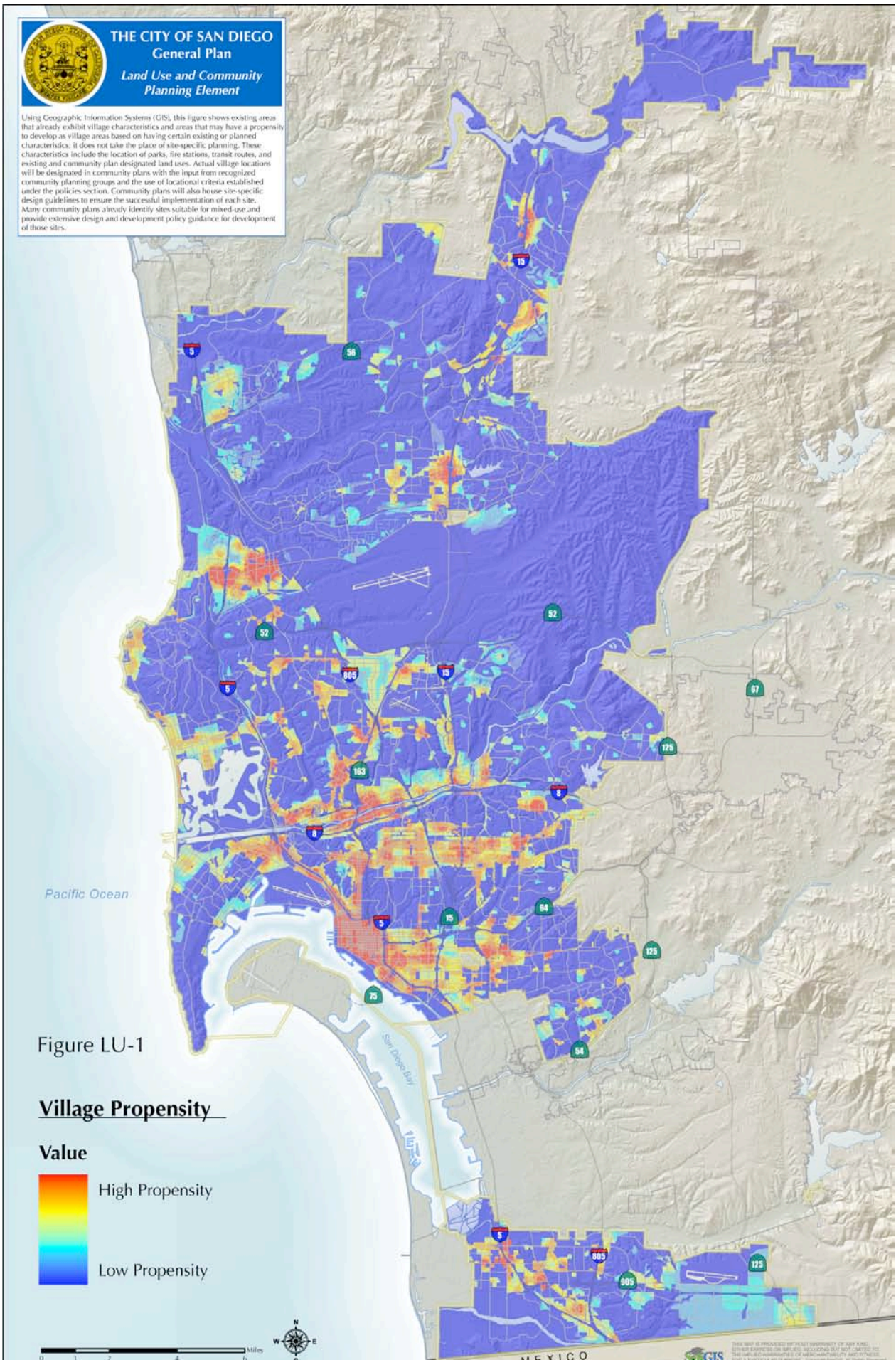


Figure LU-1

**Village Propensity**

**Value**

